

Accommodations

Holiday Inn Hotel in London Regent's Park

Carburton St - 100 yards
<http://ichotelsgroup.com>

Grange Fitzrovia Hotel ***

Bolsover St - 100 yards
<http://www.grangehotels.com/hotels-london/grange-fitzrovia-hotel/grange-fitzrovia-hotel.aspx>

St. Georges Hotel ****

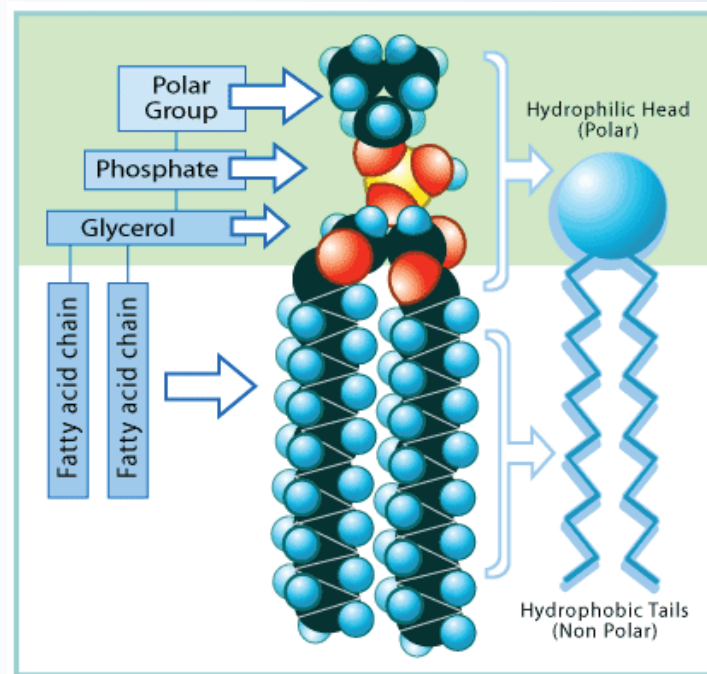
Langham Place - 250 yards, adjacent to BBC
<http://saintgeorghotel.com/>

Langham Hotel *****

Portland Place - 250 yards, adjacent to BBC
<http://london.langhamhotels.co.uk/en/>

Landmark Hotel *****

Marylebone Rd - 500 yards
<http://www.landmarklondon.co.uk/>



PHOSPHOLIPIDS: NOVEL THERAPEUTIC APPLICATIONS

Register Now!

Don't miss this seminar, it will change the way you practice medicine!

Mail your registration today with payment to:

BSEM c/o New Medicine Group
PO Box 3AP
London W1A 3AP
011 44 20 7100 7090

Please make cheques payable to BSEM.

Phospholipids
Hallam Conference Centre
The Former General Medical Council chambers
November 12th & 13th, 2010

Registration Fee for Phospholipid Conference Only: BSEM Members £280, Non-members £330.

No refunds after October 15, 2010.

For inquires email christina.winters@googlemail.com

Name _____

Address _____

City _____ State _____ Zip _____ Country _____

Telephone (_____) _____ Fax (_____) _____

For credit-card payment please call:

Diagnostic Clinic and ask for Carina Van Der Leest 011 44 207 009 4650

(2.5% administration charge added for credit card payment)

BRITISH SOCIETY FOR ECOLOGICAL
MEDICINE 2010 SCIENTIFIC CONFERENCE

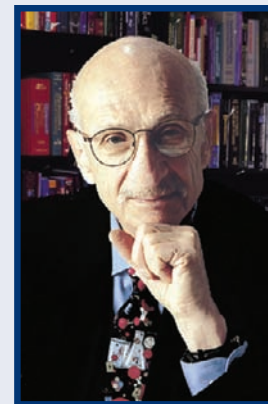
PHOSPHOLIPIDS: NOVEL THERAPEUTIC APPLICATIONS

**Friday, November 12th and
Saturday, November 13th, 2010**

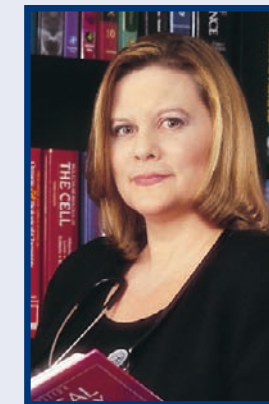
Venue

Hallam Conference Centre

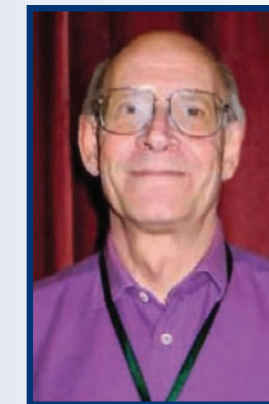
The former General Medical Council chambers
44 Hallam Street, London W1W 6JJ



International Specialist
For Phospholipids
Edward Kane



Internationally Recognized
For Neurolipid Research
Patricia Kane, Ph.D.



Cell Function Biochemist
Toxicologist
John McLaren-Howard, Ph.D.



Biological Oncologist
Meinrad Milz, M.D.

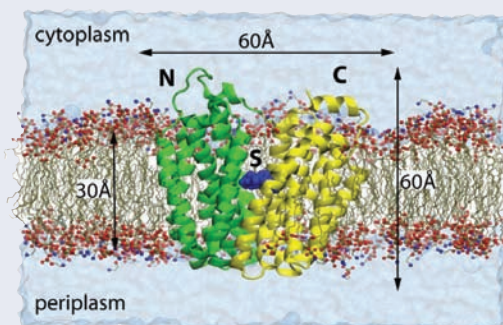
**A Lipid Approach To Toxicity, Cancer,
Cardiovascular Disease And Neurodegeneration**

Phospholipids: Novel Therapeutic Applications November 12th thru 13th, 2010

A Lipid Approach To Toxicity, Cancer, Cardiovascular Disease And Neurodegeneration

Friday, November 12th

9.00 - 10.00	Life on the Membrane An Introduction to lipid biochemistry of cell membranes and their function	Edward Kane
10.00 - 11.00	Phospholipid Abnormalities in Health and Disease	Patricia Kane
11.00 - 11.30	NUTRITION BREAK	
11.30 - 12.30	Lipid Signalling in Disease	Narasimham Parinandi
12.30 - 13.00	Panel Discussion	
13.00 - 14.00	LUNCH	
14.00 - 14.45	Phospholipids and Inflammatory Bowel Disease	Wolfgang Stremmel
14.45 - 15.30	Lipids and Endothelial Plaques	Uve Ravnskov
15.30 - 15.45	NUTRITION BREAK	
15.45 - 16.45	A Testing Portal Into The Cell	John McLaren-Howard
16.45 - 17.15	Panel Discussion	
17.15	Feedback Forms and Close	



Foundations of Ecological Medicine Training Module 1

Wednesday, November 10th thru
Thursday, November 11th, 2010

Contact Christina Winters at christina.winters@googlemail.com for details

Saturday, November 13th

9.00 - 10.15	Brain Regeneration with Lipid Therapy	Patricia Kane
10.15 - 11.15	Cancer Therapy From A Cell Membrane Perspective	Meinrad Milz
11.15 - 11.30	NUTRITION BREAK	
11.30 - 12.30	Phospholipids and Vascular Disease	Neal Speight
12.30 - 13.00	Panel Discussion	
13.00 - 14.00	LUNCH	
14.00 - 14.45	Analysis of Cellular Function	John McLaren-Howard
14.45 - 15.30	Clinical Case Studies	Katrin Bieber Shideh Pouria Patricia Kane
15.30 - 15.45	NUTRITION BREAK	
15.45 - 16.30	Clinical Case Studies II	Damien Downing Neal Speight Patricia Kane
16.30 - 17.00	Panel Discussion	
17.00 - 17.15	Closing Remarks	

Fee

BSEM Members £280, Non-members £330 (\$430 BSEM Members, \$500 Non-members)

Payment

Please print the form overleaf, complete in writing and return with a cheque to:

BSEM c/o New Medicine Group
PO Box 3AP
London W1A 3AP UK
011 44 20 7100 7090

Please make cheques payable to BSEM.

Or send an electronic money transfer (in UK sterling) from your bank to:

BSEM
Account 91637096 at HSBC Bank (UK)
IBAN number: GB85MIDL40160891637096

Your bank may make a small charge for this service

Or make a telephone credit-card payment to the BSEM via

Diagnostic Clinic
For payment queries ask for Carina Van Der Leest
011 44 207 009 4650
(2.5% administration charge added)

Please email christina.winters@googlemail.com to reserve your place and for all inquiries.

Website www.ecomed.org.uk

For doctor inquiries in the United States, please call Dr. Patricia Kane at (856) 825-8338.

For currency conversion feel free to visit: <http://www.oanda.com>